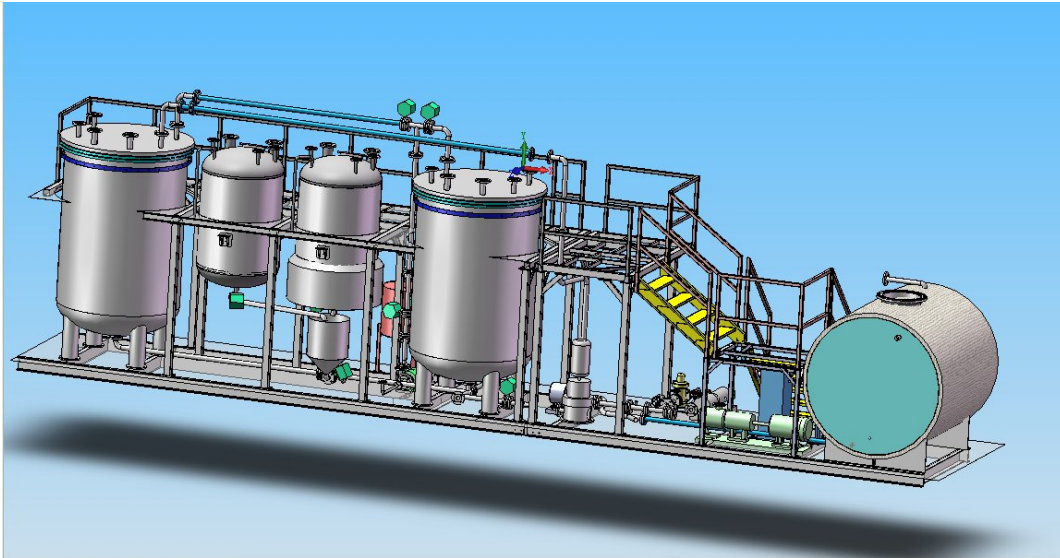


Modified Emulsion Bitumen Plant



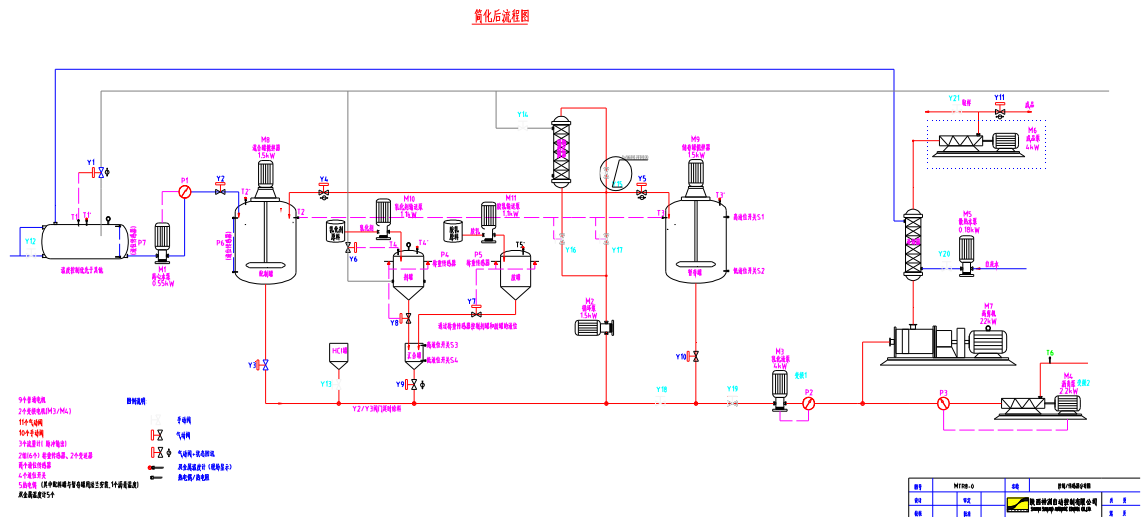
- 一. Model: MTR8
- 二. Structure: Semi-mobile knockdown structure
L×W×H=12 (6.5+5.5) X2.4X3.2(Meter)
- 三. Main technology parameter (Red words indication our products main fitting is higher than other manufactures)

No.	Name	Model	Productivity and Capacity	Quantity	Original	Remark
1	Emulsified bitumen		8 M ³ /hour			include bitumen60%,water liquor

	Max. productivity					40%
2	High speed shearing machine	15KW	8 M ³ /h	1	China	
3	Bitumen transporting pump	2.2Kw	6.3M ³ /h	1		frequency conversion adjuster
4	Bitumen flow indicator	LXC		1		flow indicator for bitumen only
5	water tank	Heat preservation	4 M ³	1		with turbine flow indicator
		conducting oil heater	1 "			
		water pump	5.5Kw			
6	Emulsion tank		3 M ³	2		Acid-proof plastic-lining 1.5Kw agitator
7	Emulsifier tank	Stainless Steel, weight measurer	1.0 M ³	1		50mm heat insulation layer
8	Emulsion tank	Stainless Steel, weight measurer	1.0 M ³	1		
9	Emulsion pump	4Kw	4 M ³ /h	1		Frequency conversion adjuster
10	2 " Emulsion circulation pump	1.5Kw	12 M ³ /h	1		magnetic force centrifugal pump
11	Recycle pump for bitumen heat	0.55Kw	3.6 M ³ /h	1		
12	Air compressor		0.4 M ³ /min	1		
13	Electrical control system			1		PLC programmed control
14	3 " finished products bitumen transport pump	4 Kw	9.8 M ³ /h	1		
15	Bitumen preview heating tank	80mm insulation	35 M ³	1		Optional
16	Finished emulsified bitumen tank	storage	25 M ³	1		
17	Conducting oil heating furnace	300 thousand Kcal.				

REMARK: Item 15, 16 &17 are optional parts for customer, Our quotation not include these parts, However we also list all these items price in the quotation sheet, thanks.

Equipment principle diagram



Remark:

1. All of the emulsified liquid pipeline plastic-lined for corrosion protection
2. Valve:
 - a. Emulsified liquid resistant to corrosion carbon steel ball valve or carbon steel DN50 butterfly valve(manual and pneumatic)
 - b. Bitumen adopt DN50 butterfly valve (manual and pneumatic)
 - c. Heat conducting oil adopt manual high temperature valve
 - d. Water valve adopt stainless steel pneumatic ball valve